

MA 131 HW# 1 Solutions

Section 1.1

1.) $m = -7, b = 3$

6.) $4x + 9y = -1$

$$9y = -4x - 1$$

$$y = -\frac{4}{9}x - \frac{1}{9}$$

$$m = -\frac{4}{9}, b = -\frac{1}{9}$$

8.) $y + 2 = 2(x - 1)$

12.) $m = \frac{4 - 1}{1 - \frac{1}{2}} = \frac{3}{\frac{1}{2}} = 6$

$$y - 4 = 6(x - 1)$$

31.) a) $x + y = -1$

$$y = -x - 1$$

Graph C

b) $x - y = 1$

$$x - 1 = y$$

Graph B

c) $x + y = -1$

$$y = -x - 1$$

Graph D

d) $x - y = -1$

$$x + 1 = y$$

Graph A

42.) l_2 has greater slope

$$47.a) C(10) = 12(10) + 1100 = 120 + 1100 = 1220$$

$$\boxed{\$1,220}$$

$$b) \boxed{\text{Marginal Cost} = \$12}$$

$$c) \frac{C(11) - C(10)}{11 - 10} = \$12$$

$$\boxed{C(11) - C(10) = \$12}$$

$$59.) \boxed{y = 6x + 1.5}$$

$$60.) \text{Input} = \frac{6 \text{ mL}}{\text{min}}$$

$$\text{Output} = \frac{2 \text{ mL}}{\text{hr}} \cdot \frac{\text{hr}}{60 \text{ min}} = \frac{1}{30} \frac{\text{mL}}{\text{min}}$$

$$\text{Rate of Change} = 6 - \frac{1}{30} = \frac{180 - 1}{30} = \frac{179}{30}$$

$$\boxed{y = \frac{179}{30}x + 1.5}$$

Section 1.2

2.) G (It's a horizontal line)

$$4.) \text{ Slope} = \frac{\text{Change in } y}{\text{Change in } x} = \frac{2}{2} = 1$$

5.) Small Positive Slope

6.) Large Positive Slope

7.) Zero Slope

8.) Large Negative Slope

9.) Zero Slope

10.) Small Negative Slope

14.) Price on April 14, 2008 \approx \$111

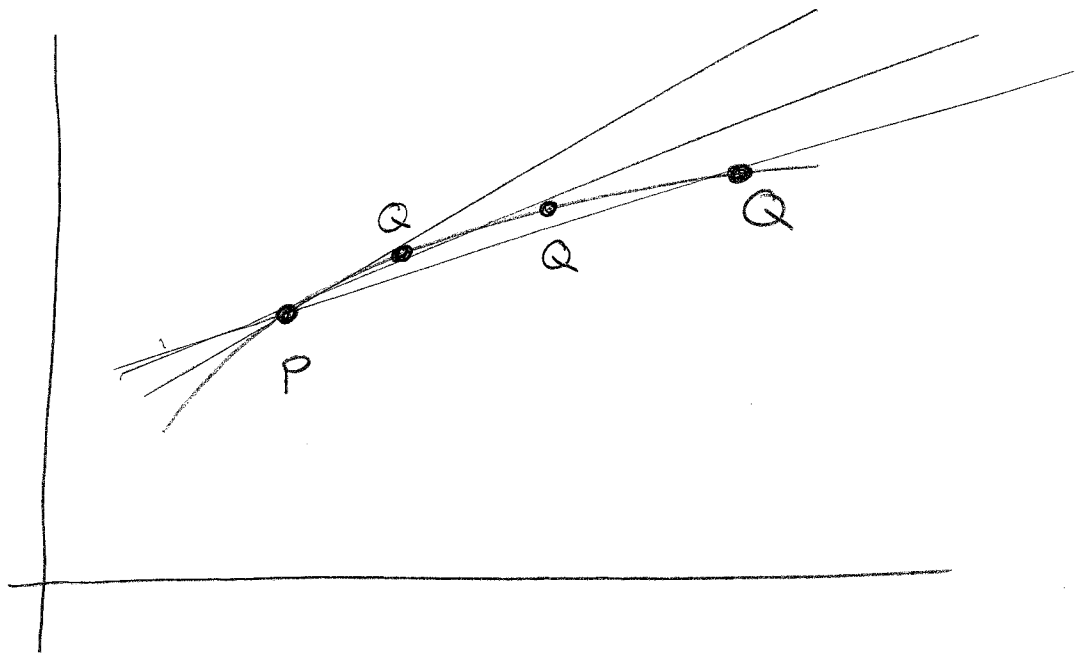
Price on April 15, 2008 \approx \$112

$$\begin{aligned} \text{Rate of Change} &= \frac{\text{Change in Price}}{\text{Change in Time}} \\ &\approx \frac{\$112 - \$111}{1 \text{ Day}} = \$1/\text{Day} \end{aligned}$$

$$37. a) \text{ Slope of } \ell = \frac{13 - 4}{5 - 2} = \frac{9}{3} = 3$$

$$\text{Length of } d = 13 - 4 = 9$$

b.)



Slope increases as Q moves towards P

38.)

